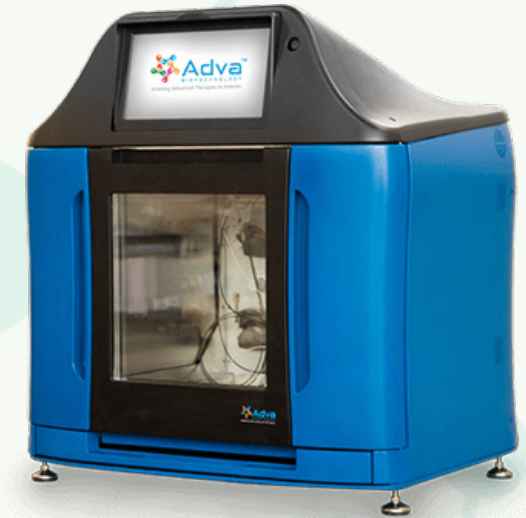


SAXOCELL<sup>®</sup>

 **SCINUS**  
CELL EXPANSION



 **Adva**<sup>®</sup>  
BIOTECHNOLOGY

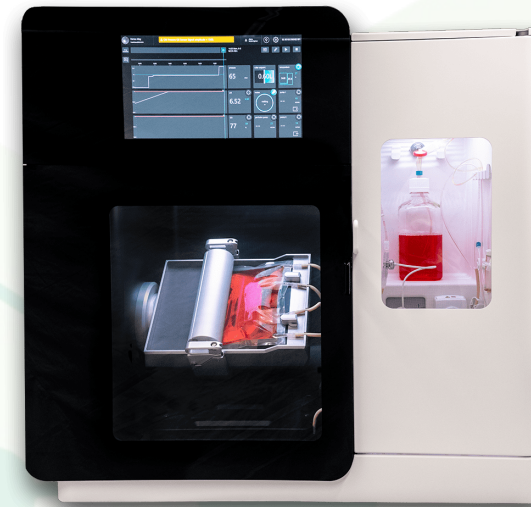


 **PBS**  
BIOTECH<sup>®</sup>



Adherent (via microcarrier) and suspension cell types, e.g.:

- Direct culture of BMSCs
- CAR-T
- Exosome / EV production
- Organoids
- Muscle Progenitor Cells



Scalable via bag system (up to 1400 ml)

List price: 125.000 €

Consumables:

# bioreactor bags/y	Price per bag	Discount per bag
1	€ 3.000,00	
20	€ 2.850,00	5,00%
50	€ 2.700,00	10,00%





SAXOCELL®

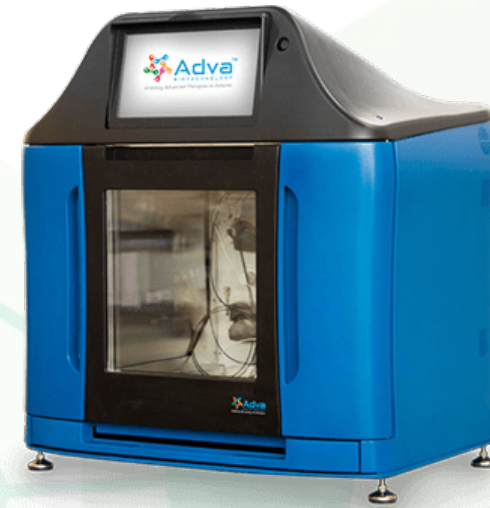
CAR-T, TRC, TIL, NK cells, exosomes, and viruses

Scalable via cone system (up to 2700 ml)

List price: US\$ 300T

Monthly rental: 8000 € (min. 3-4 month, limited period)  
(incl. shipping, Installation, training, support, maintenance,  
and warranty)

Consumables: CX900s Single Use Kit = US\$ 8000/Kit





Adherent (via microcarrier) and suspension cell types, spheroids

Scalable via device system (up to 80 l)

List price (3 l system): US\$ 86,9T

Monthly rental\* 3 l system : US\$ 9460 (3 month, can be extended) (incl. shipping, Installation, training)

\*75% of the rental fees can be credited towards purchase of the rented system

Consumables (3 l system): Single-Use Vessels + Sampling Line  
= ca. US\$ 3900



*PBS-MINI Single-Use Vessel with Bottom Port*