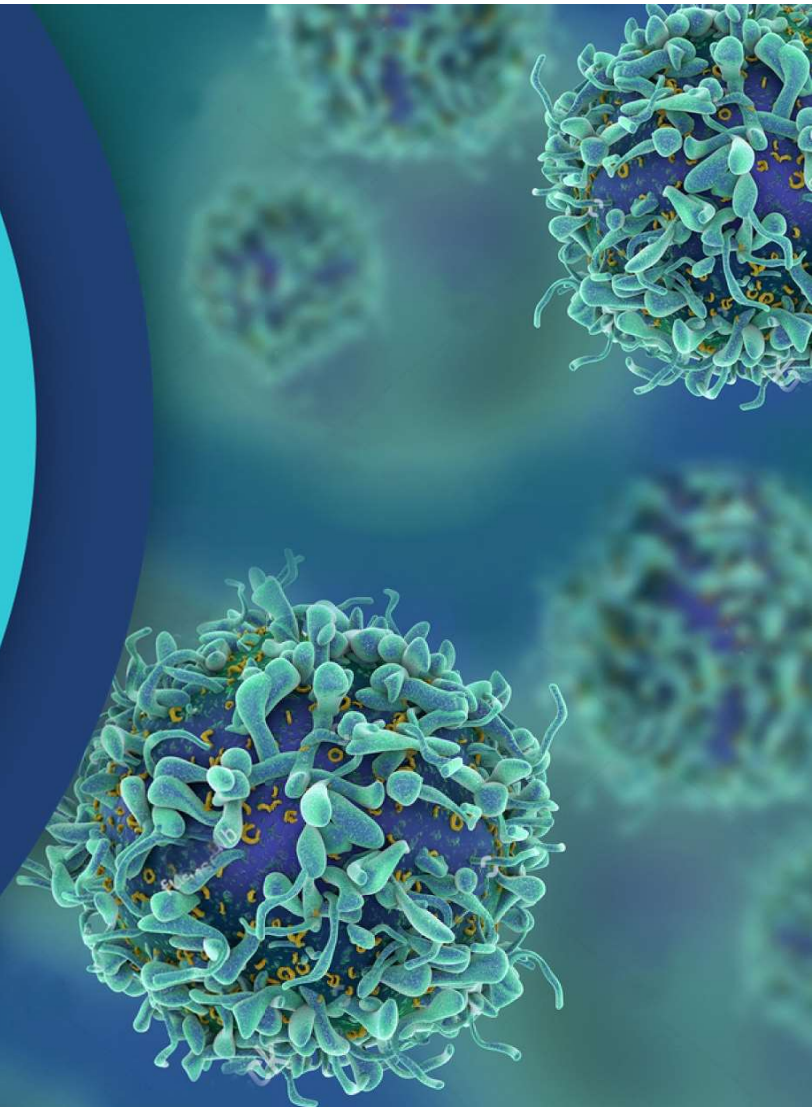




# Revolutionizing Cell Therapy Manufacturing



# Introduction to ScaleReady

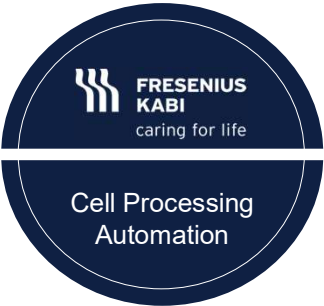
Industry veterans partnering to create a truly scalable platform for cell therapy



G-Rex Bioreactor



Cytokines  
ExCellerate Media  
TcBuster



Lovo & Cue



## Combined Manufacturing Platform

Sales, Process Optimization, and Application Support

# The ScaleReady Platform

Products have been widely adopted through late-stage clinical trials by some of the leading therapeutic companies

## Clients

700+

## Clinical Trials

170+

6

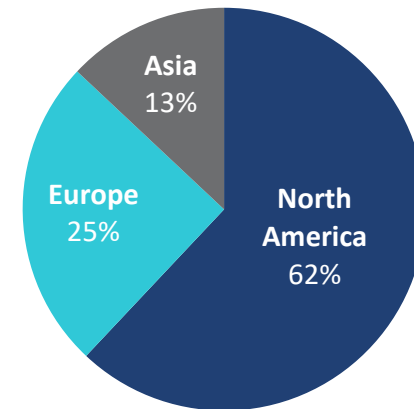
3\*

Phase 1/2

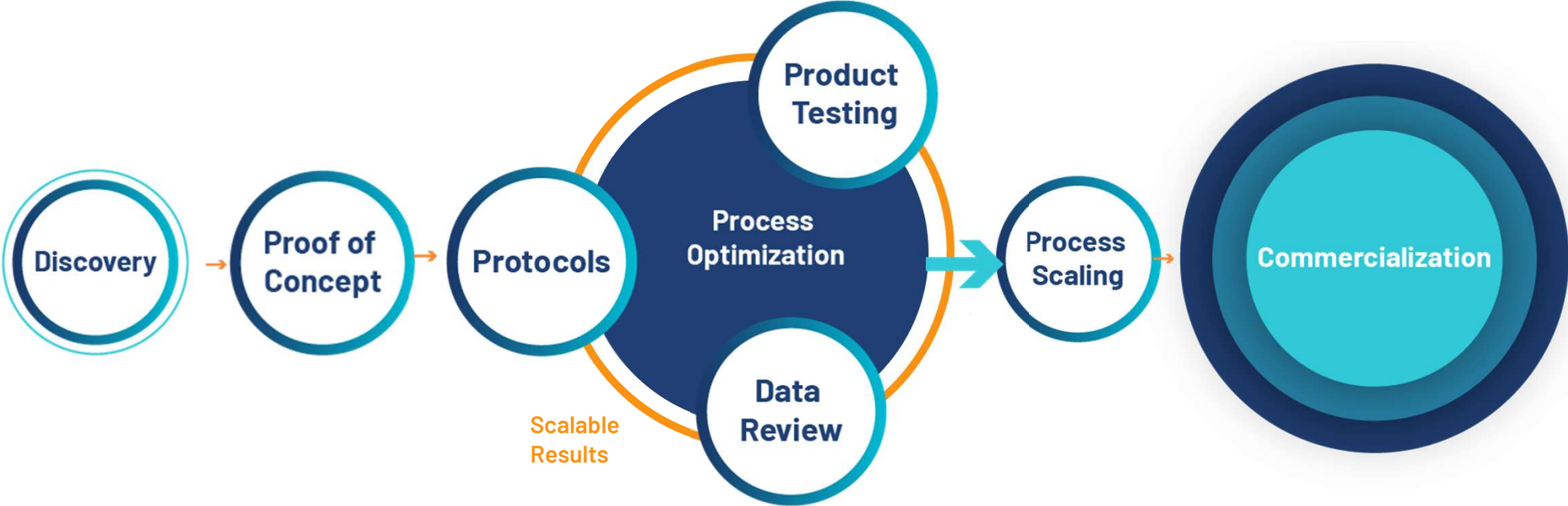
Phase 3

BLA

## Locations



ScaleReady Proven Process



# Portfolio and Product Information

## Cell Expansion

GMP and research-grade



G-Rex Cell Culture Devices

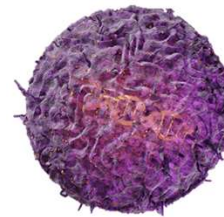


Cytokines



ExCellerate NK Cell Expansion Media, Xeno-free

## Non-viral Gene Engineering



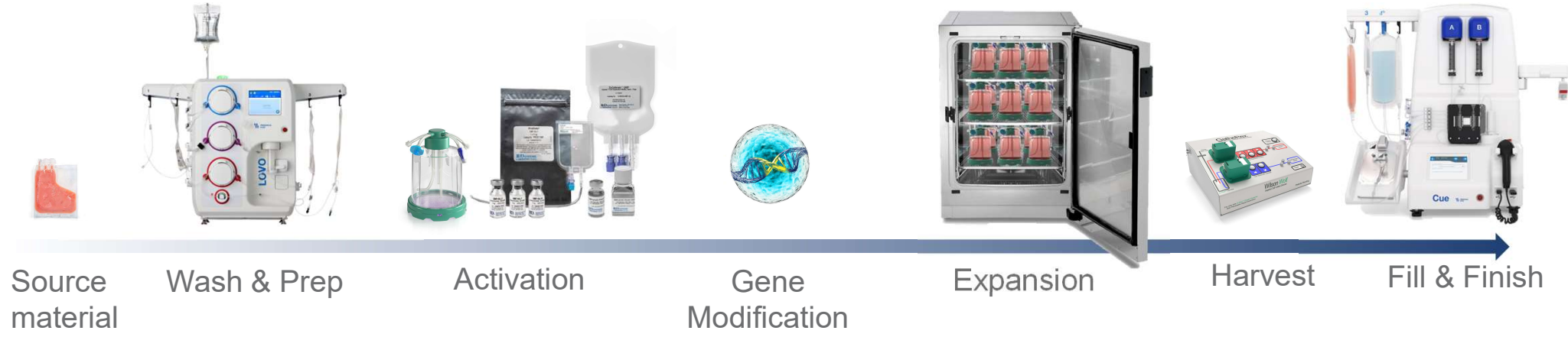
TcBuster

## Cell Processing Instruments



LOVO Cell Processing System

# ScaleReady Cell Therapy Manufacturing Workflow

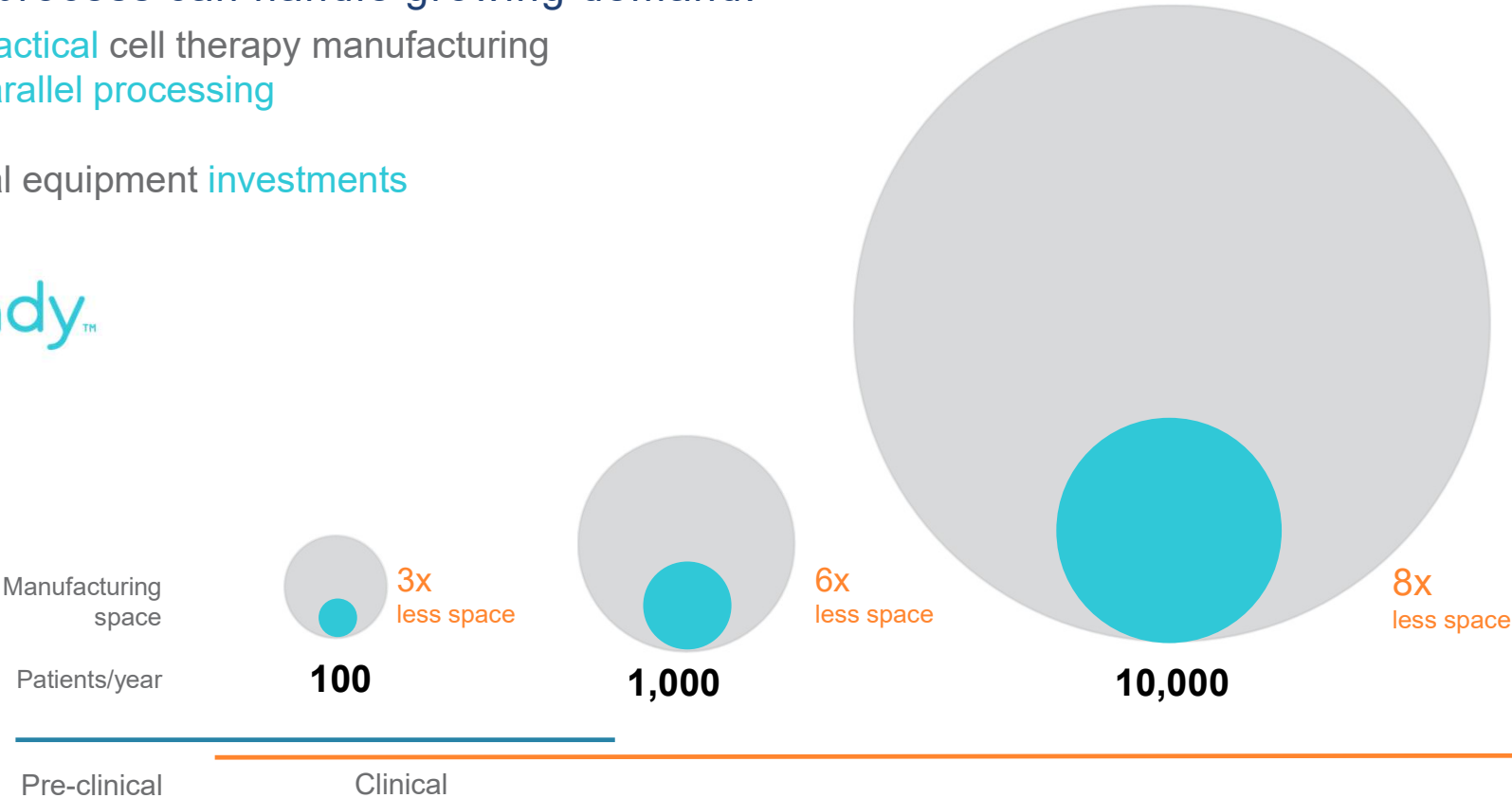


Wilson Wolf		G-Rex		G-Rex		GatheRex
Bio- Techne		Cytokines	TcBuster	Cytokines ExCellerate		
Fresenius Kabi	LOVO				LOVO	Cue

# ScaleReady Maximizes Therapeutic Potential of Your Cell Therapy

Ensuring your process can handle growing demand:

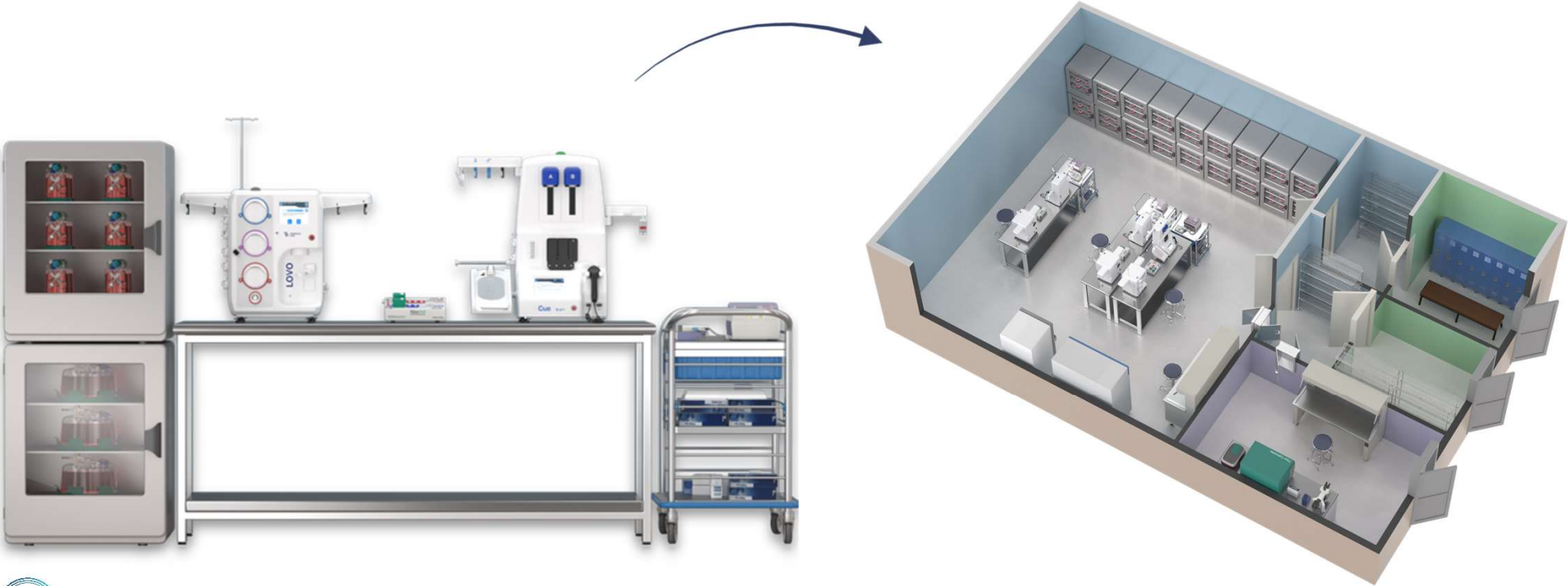
- Efficient and practical cell therapy manufacturing
- High volume parallel processing
- Small footprint
- Reduced capital equipment investments



# G-Rex Scales up Simply and Linearly

## Scale out

No longer burdened by “one instrument per patient” save space and reduce investment in capital equipment



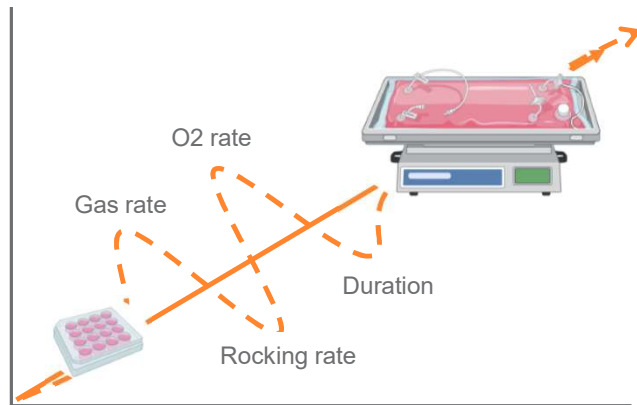


# Automated Instruments Sacrifice Scalability and Practicality

These needlessly complex instruments sacrifice scalability for automation and lack practicality when scaling out for larger patient populations.

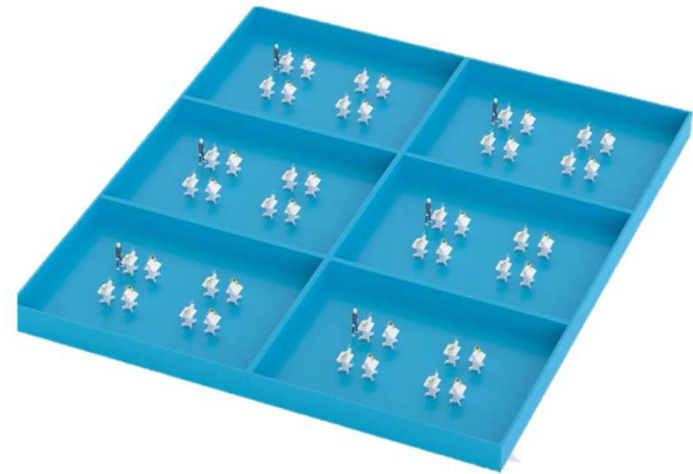
## Scale up

Small scale experiments don't easily scale up from benchtop to an instrument or "patient" dose



## Scale out

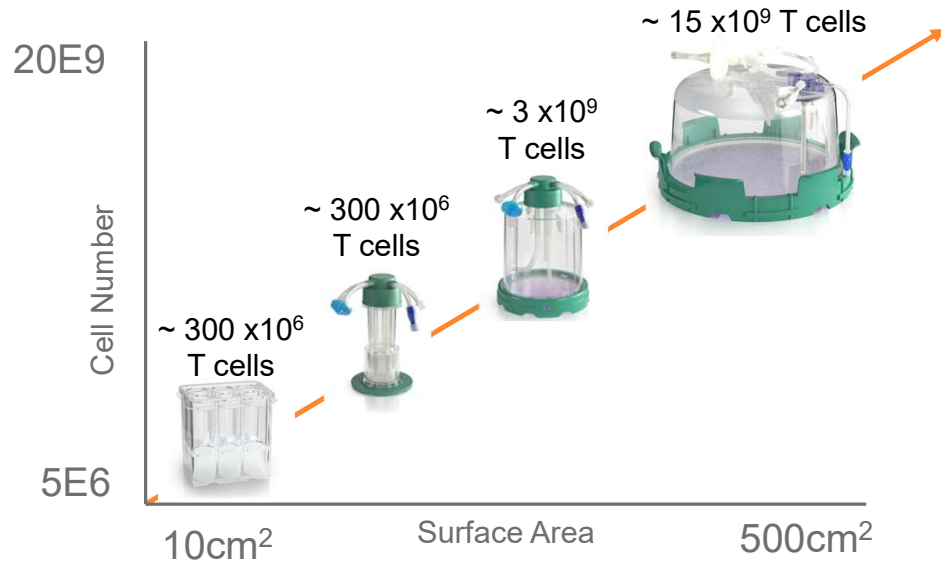
Requiring one instrument per patient means large investment in cleanroom space & capital equipment



## G-Rex Cell Culture Bioreactors

### Scale up

- Static system maximizes cell yields
- Optimized small scale experiments linearly scale to patient doses



### Scale out

- High volume parallel patient processing
- Small footprint
- Reduce investment in capital equipment

